

# Lampholders, Starters and Adapters

## Fluorescent Lampholders



### Compact Fluorescent Lampholders



Catalog Number	<b>RL479HSM</b>	<b>RL413HSI</b>	<b>RL413HSM</b>	<b>RL426G24</b>	<b>RL42G11HSM</b>	<b>RL42G11H9</b>	<b>RL42G11C</b>
Description	G23 base	GX23 base	GX23 base	G24Q-3, GX24Q-4	2G11 base, 4 pin	2G11 base, 4 pin	Clip for 2G11 lampholders base
Lamp Type	5W, 7W, 9W	13W	13W	26-32W	18-55W	18-55W	
Rating	75W 600V	75W 600V	75W 600V	75W 600V	75W 600V	75W 600V	
Mounting	Horizontal, screw-down	Horizontal, snap-in	Horizontal, screw-down	Horizontal, screw-down	Horizontal, screw-down	Vertical 90°, snap-in	Adjustable, snap-in

### High Output Fluorescent Lampholders



Catalog Number	<b>RL305*</b>	<b>RL306*</b>	<b>RL307</b>	<b>RL308</b>	<b>RL356</b>	<b>RL357</b>
Description	Plunger	Fixed	Plunger	Fixed	Plunger	Fixed
Lamp Type	Horizontal - Recessed double contact	Horizontal - Recessed double contact	Horizontal - Recessed double contact	Horizontal - Recessed double contact	Vertical - Power groove & jacketed lamps	Vertical - Power groove & jacketed lamps
Rating	660W 600V	660W 600V	660W 600V	660W 600V	660W 600V	660W 600V
Mounting	Pedestal, slide-on	Pedestal, slide-on	Slide-on, snap-in	Slide-on, snap-in	Slide-on, snap-in	Slide-on, snap-in

### Medium Bi-Pin Fluorescent Lampholders - T8 and T12



### Slimline Type Fluorescent Lampholder



Catalog Number	<b>RL320</b>	<b>RL325</b>	<b>RL325B</b>
Description	Disconnect, 4-wire	Disconnect, 4-wire	Shunted, 2-wire
Lamp Type	Bi-pin/tall profile	Bi-pin/low profile	Bi-pin/low profile
Rating	660W 600V	660W 600V	660W 600V
Mounting	Slide-on and snap-in with captive nut	Slide-on and snap-in with captive nut	Slide-on and snap-in

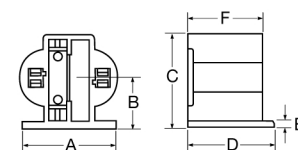


Catalog Number	<b>RL310*</b>	<b>RL311*</b>
Description	Plunger	Fixed
Lamp Type	Single pin	Single pin
Rating	660W 600V	660W 600V
Mounting	Slide-on and snap-in	Slide-on and snap-in

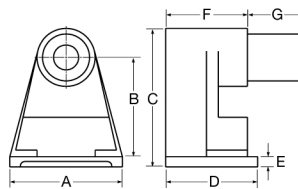
Note: \*UL and cUL.

### Product Dimensions Inches (mm)

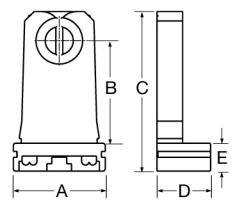
	RL479HSM	RL413HSI	RL413HSM	RL426G24	RL42G11HSM	RL42G11H9
A	1.28" (32.5)	0.77" (19.5)	1.28" (32.5)	1.31" (33.3)	1.83" (46.5)	1.32" (33.5)
B	0.69" (17.5)	0.69" (17.5)	0.69" (17.5)	1.13" (28.7)	0.83" (21.0)	1.14" (29.0)
C	1.28" (32.5)	1.28" (32.5)	1.28" (32.5)	1.54" (39.1)	—	1.92" (48.7)
D	1.28" (32.5)	1.35" (34.3)	1.16" (29.5)	—	0.94" (24.0)	—
E	0.09" (2.3)	—	0.09" (2.3)	0.16" (4.0)	—	0.16" (4.0)



	RL305	RL306	RL310	RL311
A	1.45" (36.8)	1.45" (36.8)	1.54" (39.1)	1.31" (33.3)
B	1.20" (30.5)	1.20" (30.5)	1.50" (38.1)	1.13" (28.7)
C	1.90" (48.3)	1.90" (48.3)	1.90" (48.3)	1.54" (39.1)
D	1.26" (32.0)	1.26" (32.0)	—	—
E	0.14" (3.6)	0.14" (3.6)	0.14" (3.6)	0.16" (4.1)
F	1.12" (28.4)	1.12" (28.4)	0.75" (19.1)	1.20" (30.5)
G	0.75" (19.1)	—	1.12" (28.4)	—



	RL320	RL325/B
A	1.23" (31.2)	1.23" (31.2)
B	1.75" (44.5)	1.28" (32.5)
C	2.14" (54.4)	1.65" (41.9)
D	—	0.70" (17.8)
E	0.38" (9.7)	0.37" (9.4)



# Lampholders, Starters and Adapters

## Fluorescent Starters and Technical Information



### Fluorescent Starters, Standard Type



Catalog Number	FS2A	FS4A	FS5A	FS25A
Number of Pins	2	2	2	2
Lamp Watts	14, 15 and 20	13, 30 and 40	4, 6 and 8	25



### Technical Information

RL5221 HID Incandescent Lampholder

RL426G24 Compact Fluorescent Lampholder

#### Specification

Rating 1500W 600V Max, 5KV Pulse

#### Specification

Rating 26-32W lamp type, 75W 600V

#### Mechanical

Material Glazed porcelain body with ceramic arc shield  
Screw shell: Brass with nickel plate

#### Mechanical

Material High Strength Polycarbonate

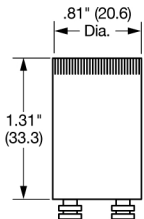
#### Terminal Accommodation

Wire leads: #14 AWG SF-2 (SEW-2) 200°C, 600V glass braided, 12 inch long, stripped 1/2 inch wire. Mogul Base EX39 lampholder used with ANSI type "o" metal halide lamps, open-rated protected lamps, for use in open or enclosed luminaires. "EX" style exclusionary base designed specifically for operation with protected sockets.

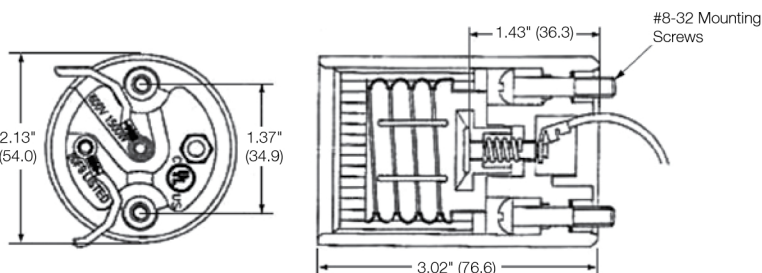
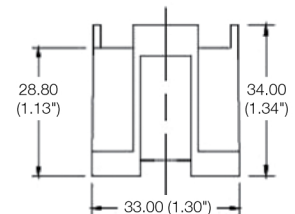
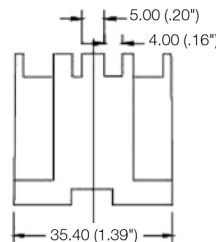
#### Terminal Accommodation

Suitable as G24Q-3 or GX24Q4 type base, horizontal mount, screw down. Push-in wire terminals for #18 AWG solid or twist and tin stripped 7/16 inch wire. Maximum 6.5 inch lbs conductor insertion force. Wiring port accepts 2 wires for harness wiring.

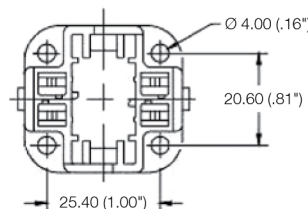
### Product Dimensions Inches (mm)



Fluorescent Starters



RL5221



RL426G24